

McKenna Park  
**ALAMEDA**



**Elevation A**

**Approx. square feet:** 2,400  
**Stories:** 2  
**Bedrooms:** 4 - 5  
**Garage:** 3-car  
**Plan Number:** S685

The Alameda floor plan has a spacious open great room, a dining room with a courtyard view, a well-appointed kitchen with walk-in pantry, a convenient main-floor bedroom and a full bath. Upstairs you'll find a loft and three additional bedrooms—each with its own bathroom. The large master bath has a separate tub and shower, double sinks and a roomy walk-in closet.

**Available elevations:**



**Elevation A**



**Elevation B**



**Elevation C**

**COMMUNITY LOCATION**

6928 Ivy Drive  
 Chino, CA 91710  
 800-852-9714

**HOME GALLERY**

5171 California Avenue  
 Irvine, CA 92617  
 800-852-9714



**COMMUNITY LOCATION**

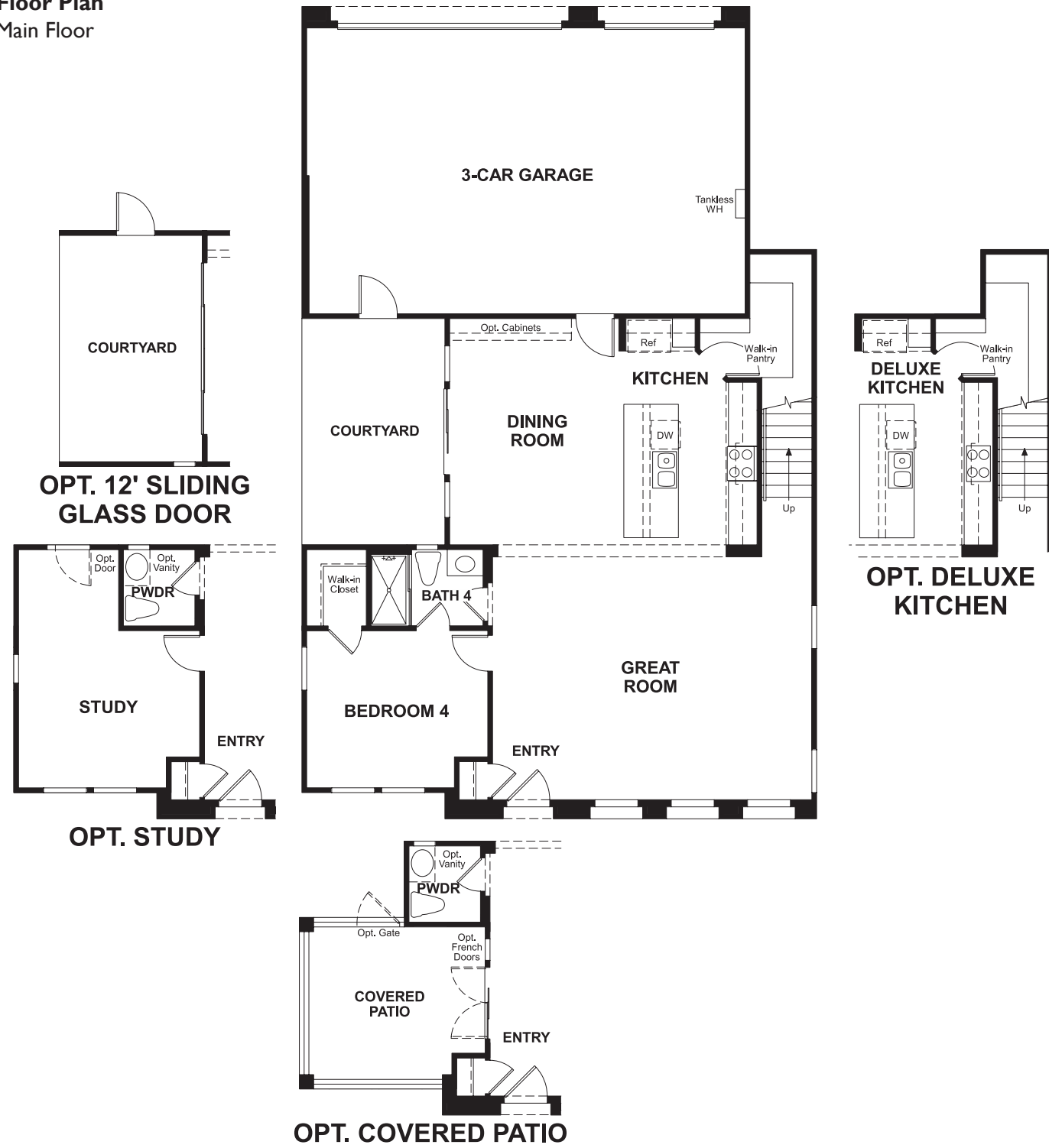
6928 Ivy Drive  
 Chino, CA 91710  
 800-852-9714

**HOME GALLERY**

5171 California Avenue  
 Irvine, CA 92617  
 800-852-9714



**Floor Plan**  
Main Floor



**Floor Plan**  
Second Floor

